

# Waukesha VGF GL to GSI Conversion Upgrade

## Conversion, Modification & Upgrade Offering

### Product description

Take on the toughest fuels, reduce emissions, and increase output with the Waukesha\* VGF\* lean burn to rich burn conversion kit. Operate your engine almost anywhere in the world with its decreased emissions through the use of a three-way catalyst. This rebuild kit converts a VGF GL to GSI engine and adds a relatively small cost differential when performing this conversion at the time of a major overhaul.

### Product details

#### Kit includes:

- Cylinder head assemblies
- Turbo and wastegates
- Power cylinders
- Damper
- Complete gasket kit
- Main bearing set
- Harness upgrade
- Jacket water pump repair kit
- Auxiliary Water pump repair kit

### Customer benefits

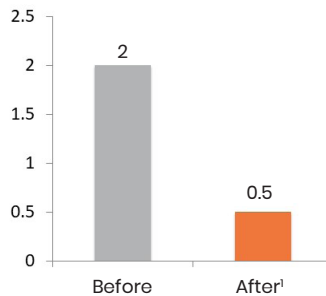
- **Reduced emission rates** when coupled with a three-way catalyst.
- **Increased fuel tolerance** provides more power on hot fuels and better availability during changes in fuel quality.
- **More power** at high altitudes and better availability through ambient temperature changes.

### Applicable units

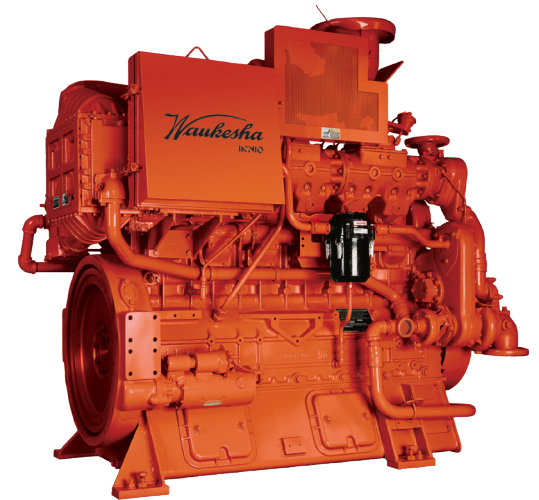
VGF	F18GL H24GL
-----	----------------

### Emission Reduction

NOx Emissions (g/bhp-hr)



<sup>1</sup>With 3 way catalyst



INNIO\* is a leading solutions provider of gas engines, power equipment, a digital platform and related services for power generation and gas compression at or near the point of use. With our Jenbacher\* and Waukesha\* product brands, INNIO pushes beyond the possible and looks boldly toward tomorrow. Our diverse portfolio of reliable, economical and sustainable industrial gas engines generates 200 kW to 10 MW of power for numerous industries globally. We can provide life cycle support to the more than 48,000 delivered gas engines worldwide. And, backed by our service network in more than 100 countries, INNIO connects with you locally for rapid response to your service needs. Headquartered in Jenbach, Austria, the business also has primary operations in Welland, Ontario, Canada, and Waukesha, Wisconsin, US.

Find your local support online: [www.innio.com/en/company/providers](http://www.innio.com/en/company/providers)

IWK-219016-EN

\*Indicates a trademark  
© Copyright 2019 INNIO Waukesha Gas Engines Inc. Information provided is subject to change without notice. All values are design or typical values when measured under laboratory conditions.